

# ÜBERSICHTSZEICHNUNG

## ASSEMBLY DRAWING

**GHOST**

*LECTOR FS SF ESSENTIAL*



*LECTOR FS SF UNIVERSAL*



*LECTOR FS SF ADVANCED*



*LECTOR FS SF PRO*



*LECTOR FS SF WORLD CUP*



## LECTOR FS SF (MY22)

Datum: 28-10-2021

Version: 01



LECTOR FS SF (MY22)

date: 28-10-2021

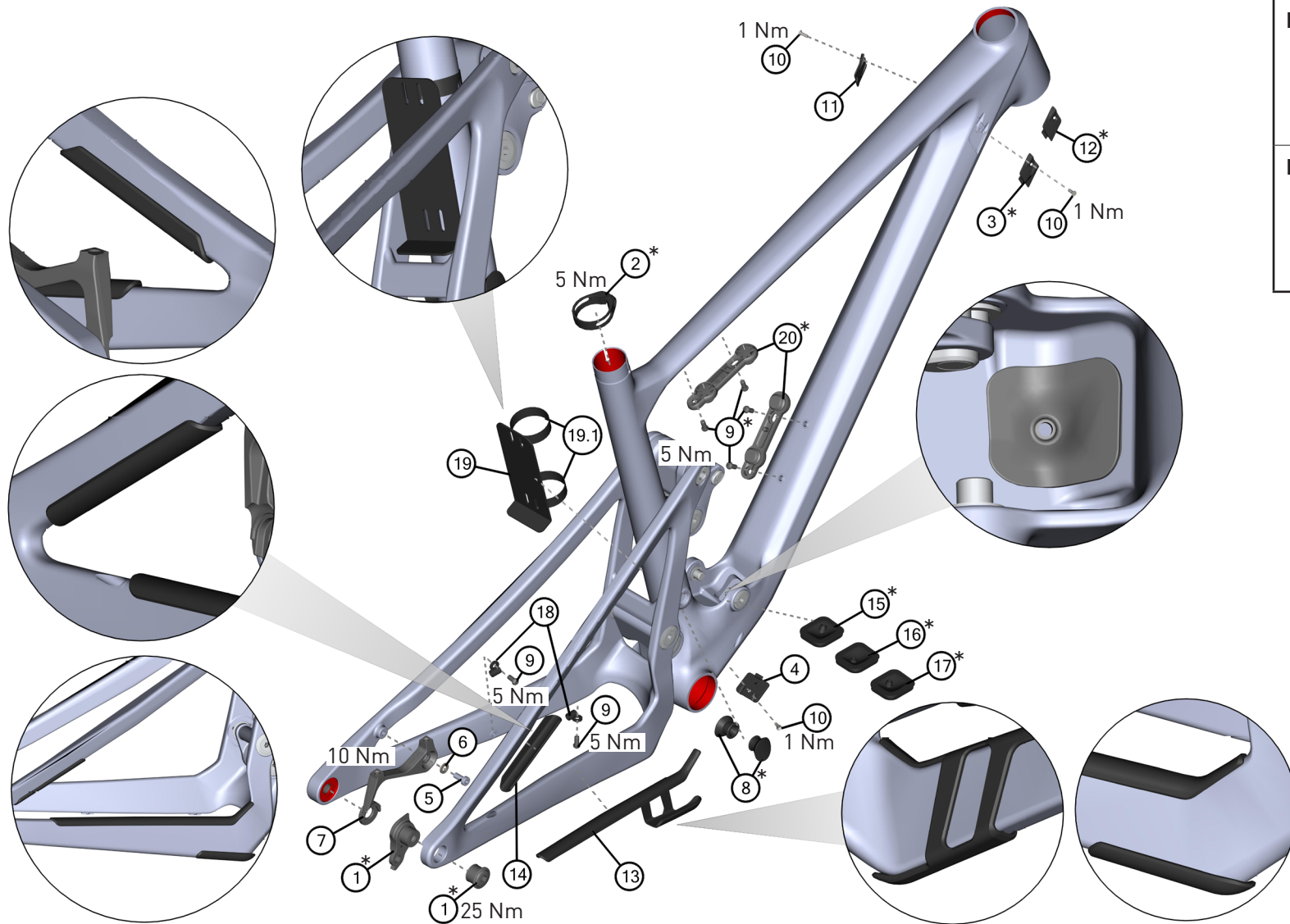
version: 01

page 1 / 9

# ÜBERSICHTSZEICHNUNG

## ASSEMBLY DRAWING main frame

# GHOST



**Hinweis:** Bei den Schrauben muss mittelfeste Gewindegewissicherung verwendet werden. Rote Flächen müssen gefettet werden.

**Note:** use medium strength screw lock for screw threads. red surfaces has to be greased.

# ÜBERSICHTSZEICHNUNG

## ASSEMBLY DRAWING main frame

# GHOST

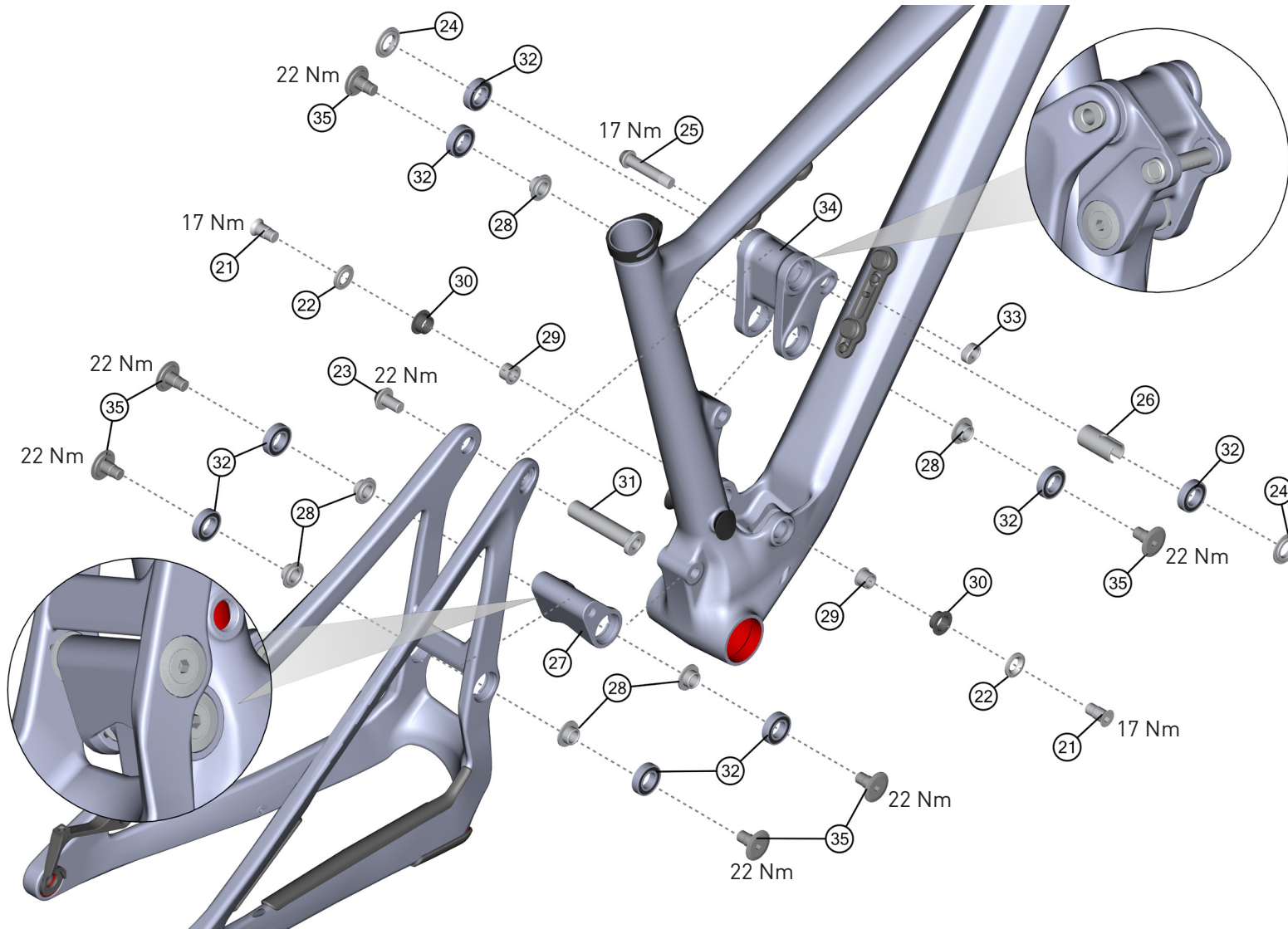
BOM-ID	Description	Specification	Torque	Item no.	QTY
1*	Hanger nut		25 Nm	FRHG0061	1
1*	Hanger			FRHG0061	1
2*	GW Seatclamp <b>(without EightPins)</b>	Style A 38,0 mm black	5 Nm	SC0009	1
3*	Cable routing HT - <b>right side (2 cable)</b>			FROT0192	1
4	Cable routing BB (2 cable)			FROT0197	1
5	Hexagon socket screw	Hex 4 - M6 x 14 mm	10 Nm	SM1693	1
6	Washer	ø 6,4 mm		SM1243	1
7	Disconnect brakemount PM 180mm			FROT0202	1
8*	PP Rubber Plug, left side without thread into frame <b>(without EightPins)</b>			FROT0173	1
8*	PP Rubber Plug, right side with thread into frame <b>(without EightPins)</b>			FROT0226	1
9*	Lens head screw, <b>Framesize XS</b>	TX25 - M5 x 12 mm	5 Nm	SM0919	4
9*	Lens head screw, <b>Framesize S - XL</b>	TX25 - M5 x 12 mm	5 Nm	SM0919	6
10	Counter sunk screw	TX10 - M3 x 10 mm	1 Nm	SM1524	3
11	Cable routing HT - <b>left side (2 cable)</b>			FROT0195	1
12*	Cable routing HT - <b>right side (1 cable)</b>			FROT0193	1
13	Protector chain stay			FRPR0067	1
14	Protector seat stay			FRPR0068	1
15*	Cable guide - shock DT Swiss			FROT0201	1
16*	Cable guide - shock Rock Shox			FROT0200	1
17*	Cable guide - shock Fox			FROT0199	1
18	Cable guide			SM0002	2
19	VPP fender rear triangle			FER0029	1
19.1	Klett-Kabelband	330 x 20 mm		PM0025	2
20*	FIDLOCK TWIST bike base, <b>Framesize XS</b>			FROT0203	1
20*	FIDLOCK TWIST bike base, <b>Framesize S - XL</b>			FROT0203	2

# ÜBERSICHTSZEICHNUNG

## ASSEMBLY DRAWING

### rocker

# GHOST



**Hinweis:** Bei den Schrauben muss mittelfeste Gewindegewissicherung verwendet werden. Rote Flächen müssen gefettet werden.

**Note:** use medium strength screw lock for screw threads. red surfaces has to be greased.

# ÜBERSICHTSZEICHNUNG

## ASSEMBLY DRAWING rocker

**GHOST**

BOM-ID	Description	Specification	Torque	Item no.	QTY
21	Flat head screw <b>(for shock)</b>	Hex 6 - M10 x 21,7 mm	17 Nm	FRSC0105	2
22	Cap for trunnion mount	∅ 11 x ∅ 22 x 3 mm		FRWS0046	2
23	Rocker mount screw	Hex 6 - M10 x 17 mm	22 Nm	FRSC0159	1
24	Spacer for rocker mount	∅ 15 x ∅ 22 x 4,8 mm		FRWS0041	2
25	Shock mount screw	Hex 6 - M10 x 49 mm	17 Nm	FRSC0103	1
26	Sleeve for rocker	∅ 15,2 x ∅ 19 x 37,6 mm		FRSP0003	1
27	VPP link			FRSC0108	1
28	Spacer for bearing seat	∅ 11 x ∅ 15 x 10 mm		FRSP0001	6
29	Sleeve for trunnion mount	∅ 11 x ∅ 14 x 10,5 mm		FRSP0004	2
30	Bushing for trunnion mount	∅ 14 x ∅ 16 x 8 mm		FROT0190	2
31	Axle Rocker mount	M10 - ∅ 15 x 74,5 mm		FRAX0009	1
32	Bearing 61902	∅ 15 x ∅ 28 x 7 mm		FRBR0001	8
33	Nut for shock mount	M10		FRNT0053	1
34	Rocker			FRRO0003	1
35	Flat head screw incl. cap <b>Not to be used for mounting the shock!</b>	Hex 6 - M10 x 21,7 mm	22 Nm	FRSC0024	6

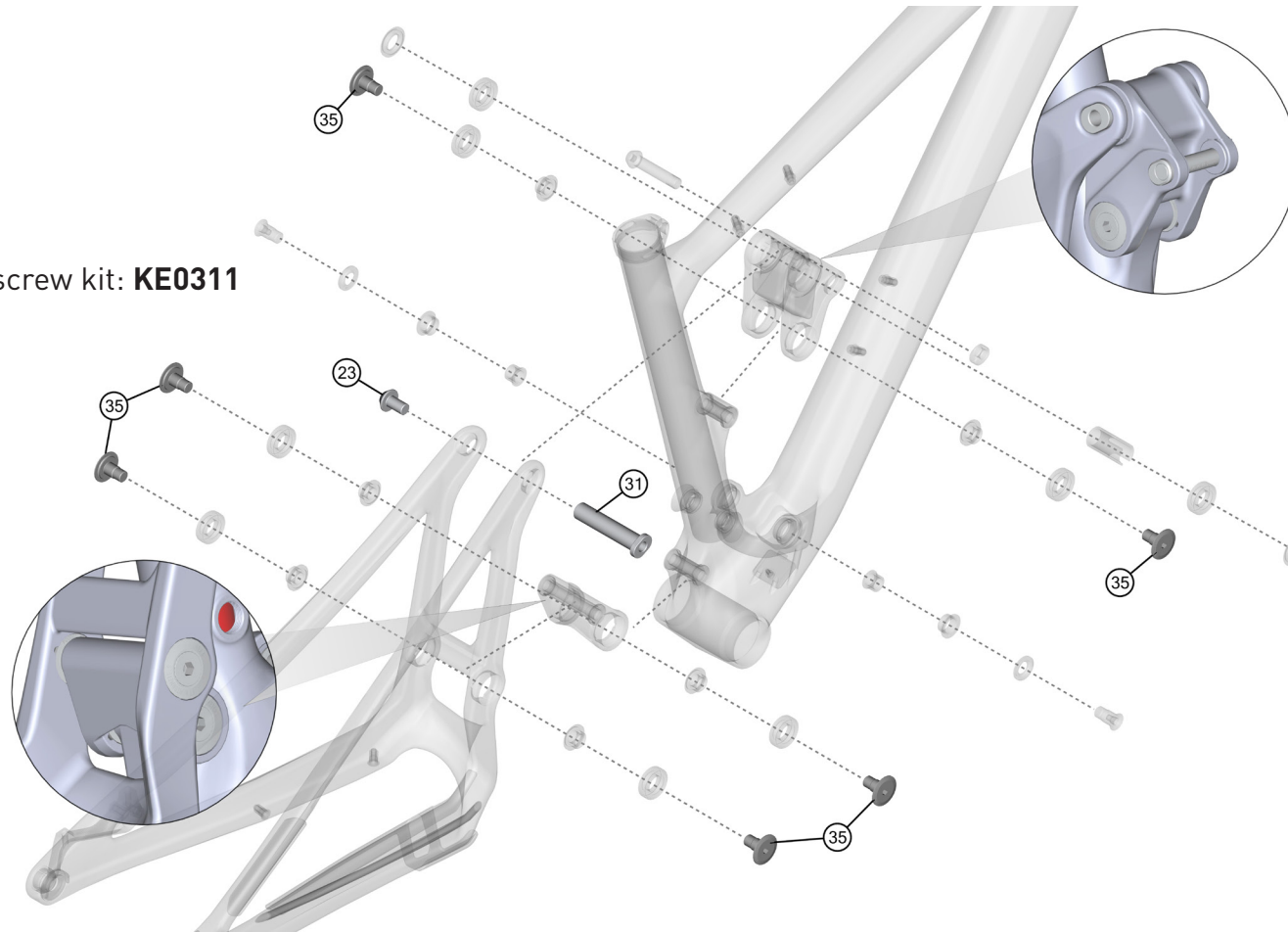
# ÜBERSICHTSZEICHNUNG

## ASSEMBLY DRAWING axle & screw kit

**GHOST**

BOM-ID	Description	Specification	Torque	Item no.	QTY
	Axle an screw Kit			KE0311	1
23	Rocker mount screw	Hex 6 - M10 x 17 mm	22 Nm	FRSC0159	1
31	Axle Rocker mount	M10 - Ø 15 x 74,5 mm		FRAX0009	1
35	Flat head screw incl. cap	Hex 6 - M10 x 21,7 mm	22 Nm	FRSC0024	6

Item no. axle and screw kit: **KE0311**



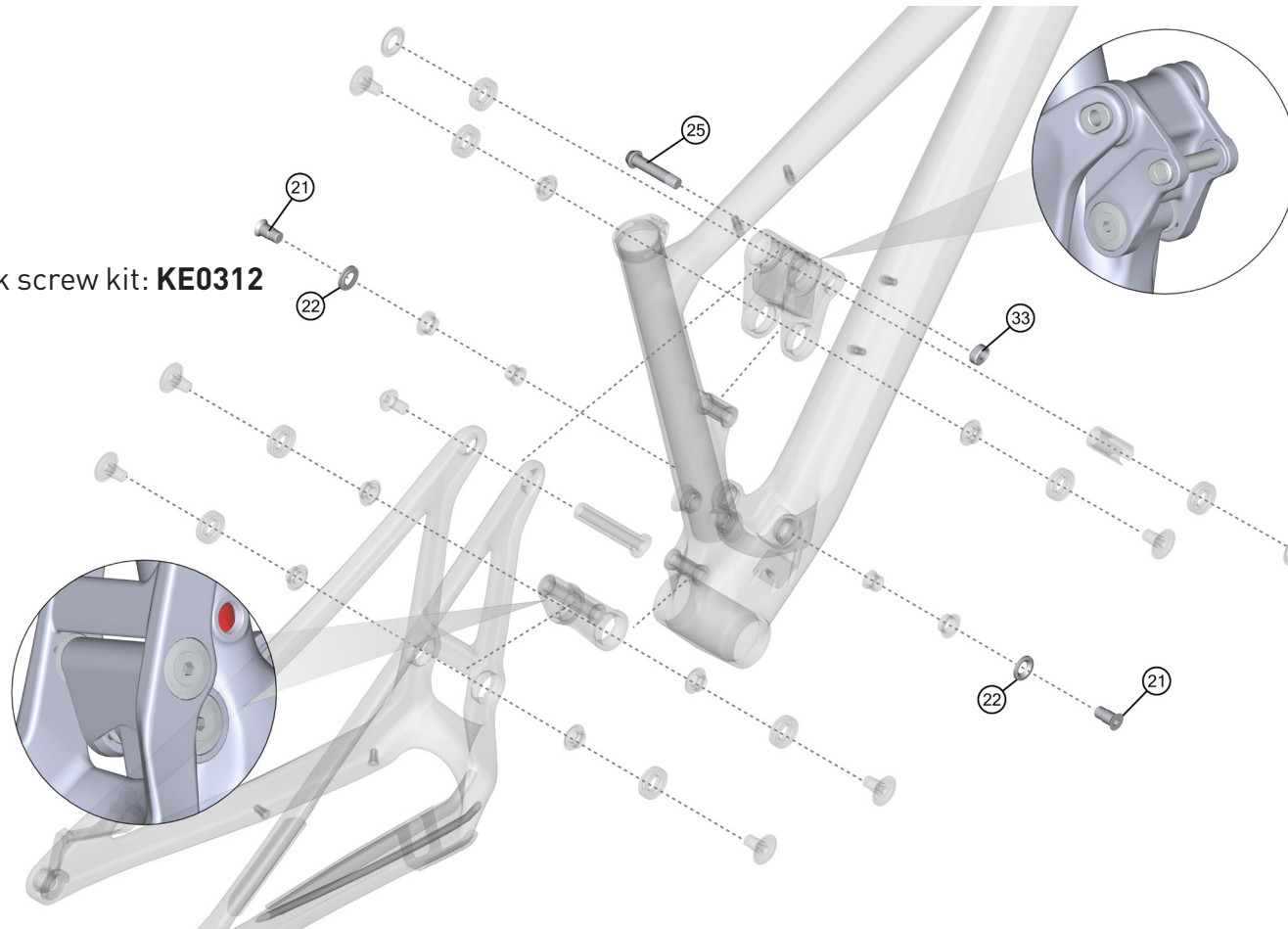
# ÜBERSICHTSZEICHNUNG

## ASSEMBLY DRAWING rear shock screw kit

**GHOST**

BOM-ID	Description	Specification	Torque	Item no.	QTY
	Rear shock screw Kit			KE0312	1
21	Flat head screw	Hex 6 - M10 x 21,7 mm	17 Nm	FRSC0105	2
22	Cap for trunnion mount	∅ 11 x ∅ 22 x 3 mm		FRWS0046	2
25	Shock mount screw	Hex 6 - M10 x 49 mm	17 Nm	FRSC0103	1
33	Nut for shock mount	M10		FRNT0053	1

Item no. rear shock screw kit: **KE0312**



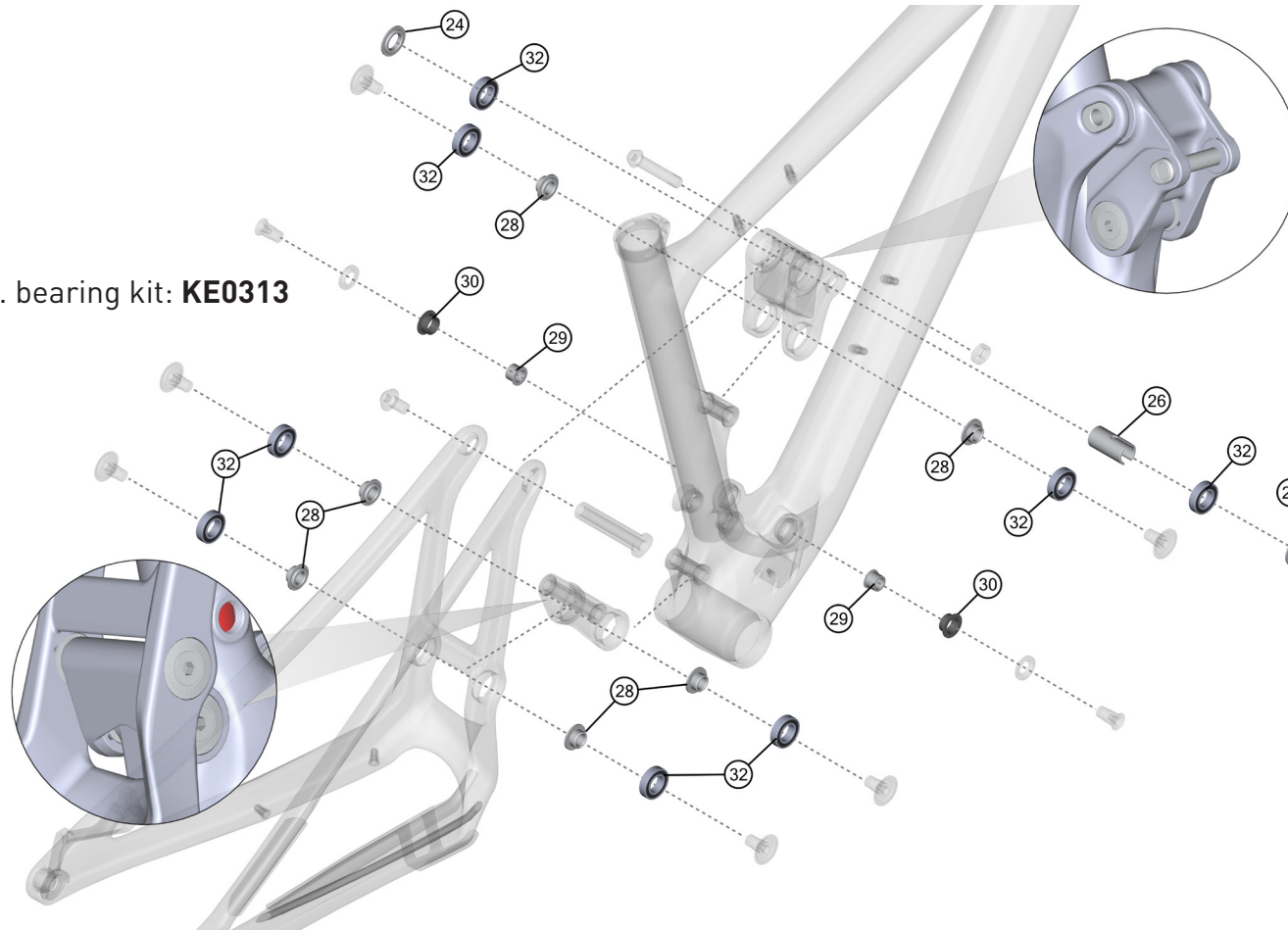
# ÜBERSICHTSZEICHNUNG

## ASSEMBLY DRAWING bearing kit

**GHOST**

BOM-ID	Description	Specification	Torque	Item no.	QTY
	Bearing Kit			KE0313	1
24	Spacer for rocker mount	∅ 15 x ∅ 22 x 4,8 mm		FRWS0041	2
26	Sleeve for rocker	∅ 15,2 x ∅ 19 x 37,6 mm		FRSP0003	1
28	Spacer for bearing seat	∅ 11 x ∅ 15 x 10 mm		FRSP0001	6
29	Sleeve for trunnion mount	∅ 11 x ∅ 14 x 10,5 mm		FRSP0004	2
30	Bushing for trunnion mount	∅ 14 x ∅ 16 x 8 mm		FROT0190	2
32	Bearing 61902	∅ 15 x ∅ 28 x 7 mm		FRBR0001	8

Item no. bearing kit: **KE0313**





# ÜBERSICHTSZEICHNUNG

## ASSEMBLY DRAWING

# GHOST

FACT SHEET:	
SHOCK LENGTH:	165 MM
SHOCK HARDWARE TOP:	30x10
SHOCK HARDWARE BOTTOM:	54xTR
HEADSET TOP:	ZS 44
HEADSET BOTTOM:	ZS 56
SEATPOST DIAMETER:	34,9 MM
CLAMP INNER DIAMETER:	38,0 MM
BOTTOM BRACKET:	Pressfit 92 / DUB
KICKSTAND:	-----
ISCG STANDARD:	-----
CARRIER MOUNT:	-----
FENDER COMPATIBLE:	-----

DROPPER SEATPOST READY:	Yes
WATERBOTTLE MOUNT:	Size XS / S: 1 x 0,5L + 1 x 0,75 L Size M / L / XL: 2 x 0,75 L
MAXIMUM PERMISSIBLE TOTAL WEIGHT:	120 KG
MAXIMUM TIRE SIZE:	29" x 2.35"
WHEEL SIZE:	29"
QUICK RELEASE LENGTH:	169 MM
OVER-LOCKNUT DIMENSION (O.L.D.):	148 MM
FD CLAMP SIZE:	-----
FD TYPE:	-----
ENGINE:	-----
BATTERY:	-----
DISPLAY:	-----